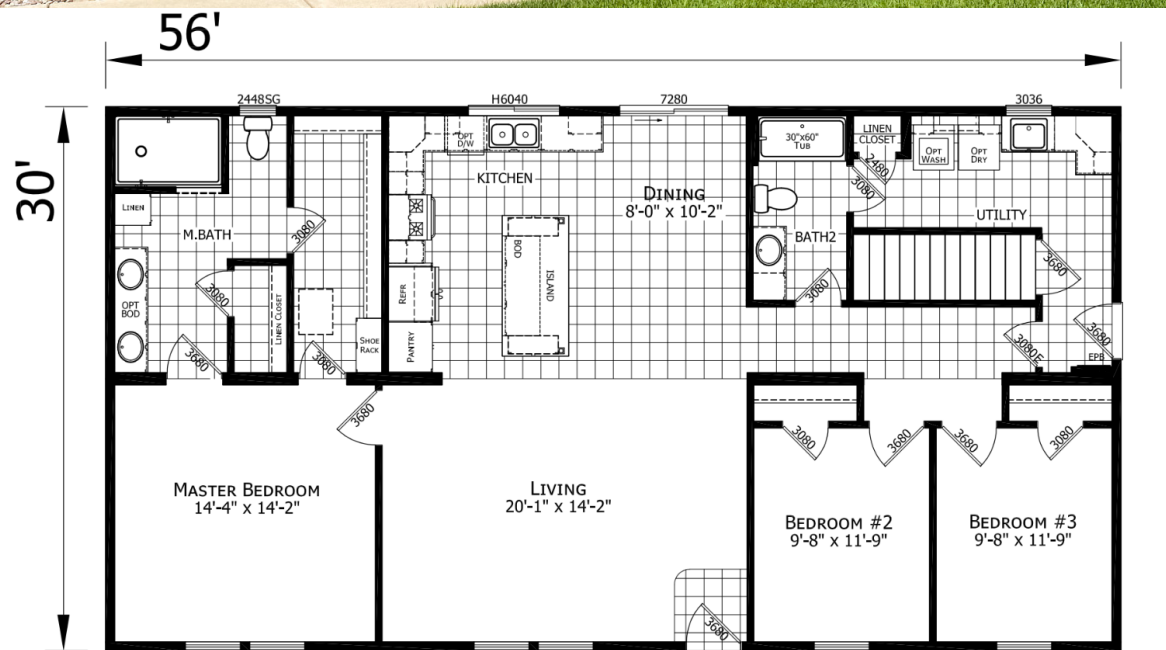


BROOKWOOD 2

3 BEDROOM, 2 BATH

1,680 SQ. FT.



OPTIONS

3 BEDROOM, 2 BATHROOM

1,680 SQ. FT.



| | | | |
|-------------------------------|----------|---------------------------------|----------|
| Modular Code | Included | Fan Mount with Dbl. Switch | \$89 |
| Stairwell with Door | \$1,000 | Brushed Nickel Lever Handles- | \$280 |
| Ship Strips Mar. Wall 8' Flat | \$495 | Interior Doors | |
| Drop Beam | \$65 | White 42" Cabinets | \$899 |
| Full Closets | \$250 | Drawer Over Door in Kitchen | \$1,050 |
| 5/12 Pitch Vault Ceiling | \$9,184 | Move Kitchen Island 2' | \$250 |
| Upgraded Carpet | \$616 | Drawer Over Door | \$1,050 |
| Omit Furnace | (\$500) | Full Tile Backsplash in Kitchen | \$1,003 |
| Omit Water Heater | (\$100) | 4'x6' Pallisade Shower- Master | \$2,935 |
| OSB I/P/O Oxboard Sheeting | \$1,720 | Smooth Top Range | \$350 |
| Vinyl Window Lineals | \$147 | 25 C.F. Refrigerator | Standard |
| 6' Patio Door | \$730 | Dishwasher | \$550 |
| 9-Lite Exterior Door | \$250 | 30" Spacemaker Microwave | \$310 |
| 28x48 Master Bath Window | \$525 | | |
| Kitchen Picture Window | \$259 | | |