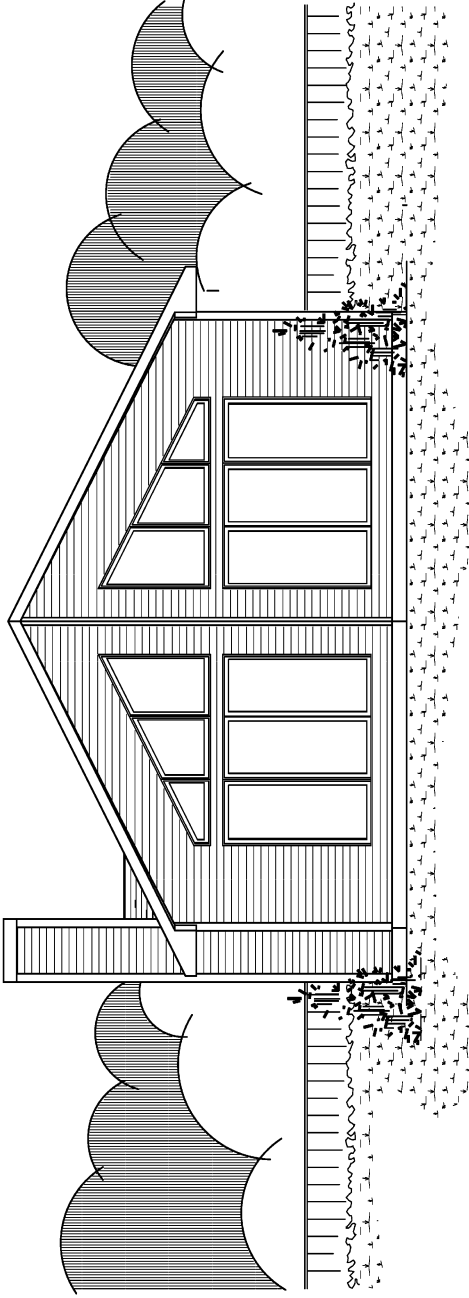


ELEVATION MAY DISPLAY
OPTIONAL FEATURES



THE WOODSMAN
RIGHT ELEVATION

THE WOODSMAN FLOOR PLAN

8'-1 1/2" CEILING HEIGHT
1361 SQ. FT.

FLOOR PLAN MAY DISPLAY
OPTIONAL FEATURES

