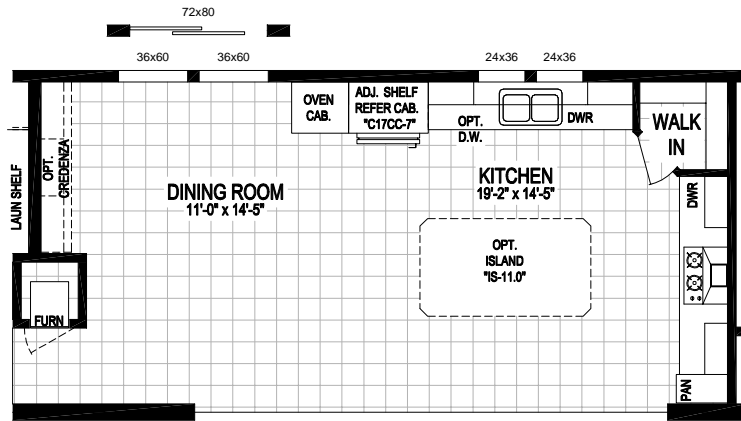


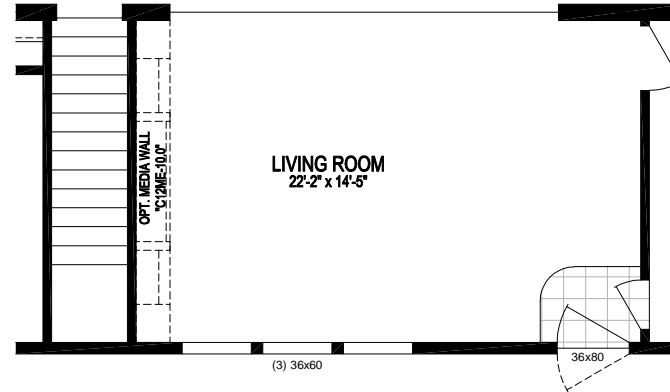
NOTE:
 HUD HOMES THAT HAVE A GAS WATER HEATER AND A 5/12
 ROOF PITCH WILL REQUIRE AN "SC" ON SITE INSPECTION

Marlette Collection
 Model 6830-528
 2040 Square Feet - 3 Bed / 2 Bath

| | | | |
|---------------------------|--|--|--|
| TITLE: 17-6830-528 | | CMH MANUFACTURING WEST | |
| DRAWN BY: BRYAN P | | DATE: 10/27/16 | |
| SERIES: Marlette | | LAST REVISED: 10/27/16 | |
| SCALE: 3/16"=1" | | CALC REF: XXXXXXXXXXXX | |
| 11/4/2014 8:34 PM | | L:\07 - Literature\2017 Literature Files\Marlette (Ella)\17-6830-528.dwg | |
| | | SHEET: 17-6830-528 | |



OPTIONAL SWEET HART KITCHEN



OPTIONAL BASEMENT STAIRWELL

Marlette Collection
 Model 6830-528
 2040 Square Feet - 3 Bed / 2 Bath

Floor Plan Options

| | | | |
|---------------------------|--|--|--|
| TITLE: 17-6830-528 | | CMH MANUFACTURING WEST | |
| DRAWN BY: BRYAN P | DATE: 10/27/16 | <small>Cost - Plant 01 437 N. Main Street, Marlette, MI 49750 PH: 874.652.7990 FAX: 874.652.7990</small> | |
| SERIES: Marlette | LAST REVISED: 10/27/16 | SHEET: 17-6830-528 | |
| SCALE: 3/16"=1" | CALC REF: XXXXXXXXXXX | | |
| 11/4/2014 8:34 PM | L:\07 - Literature\2017 Literature Files\Marlette (Ella)\17-6830-528.dwg | | |